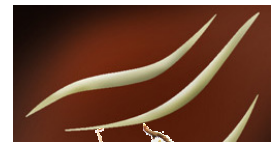
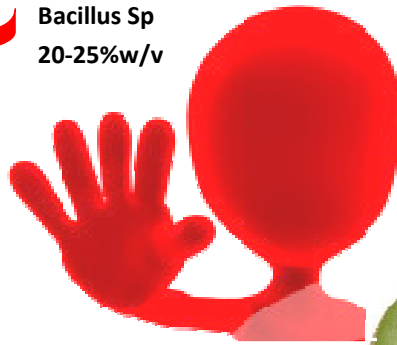


Keep Out Of Reach Of Children **PREVENT**

Bacillus Sp
20-25%w/v

An ideal product for Grapes, kiwifruit and vegetables including all other crops.

- 1.helps sterilize soil and control nematodes.
 - 2.limits the undesirable organisms in the soil.
 - 3.contributes to decomposition and disease pressure.
 - 4.performs as a growth regulator for fungi, yeast and aerobic bacteria.
- fights pathogens including powdery mildews, leaf spots, anthracnose, gray mold, and other diseases affecting leaves, flowers, fruit, and other above-ground plant parts. in gardens, vegetables, ornamentals, fruits trees, shrubs, lawns, flowers, bedding plants and potted



Soil / Ground/ fertigation	Pre planting / bareland: 5-10L/ha mix with minimum 200L water or 25mls -50mls per Litre for 25-50 sqr mtr.
Foliar	Young or Established Crop: 1L/ha mix with minimum 200L of water or mix 1L/ 200L of water (1:200) or 5mls/L . Repeat at 10-14 days interval.
Aerial	Mixing ration is 1:2 minimum
Withholding Period	Nil
Compatibility	May be tank mixed with most commonly used agrochemicals. Do jar test first. Add this product in last.



DOM : jan16
Batch: STD15
Net wgt: 5L

Formulated and Marketed By:
BSL Group Ltd
117A-Hooper Rd. Eureka. Hamilton
P O Box 7071,Hamilton East.
Hamilton
0800 77 55 11 - Fax 0064 7 839 6365
www.mybsl.co.nz